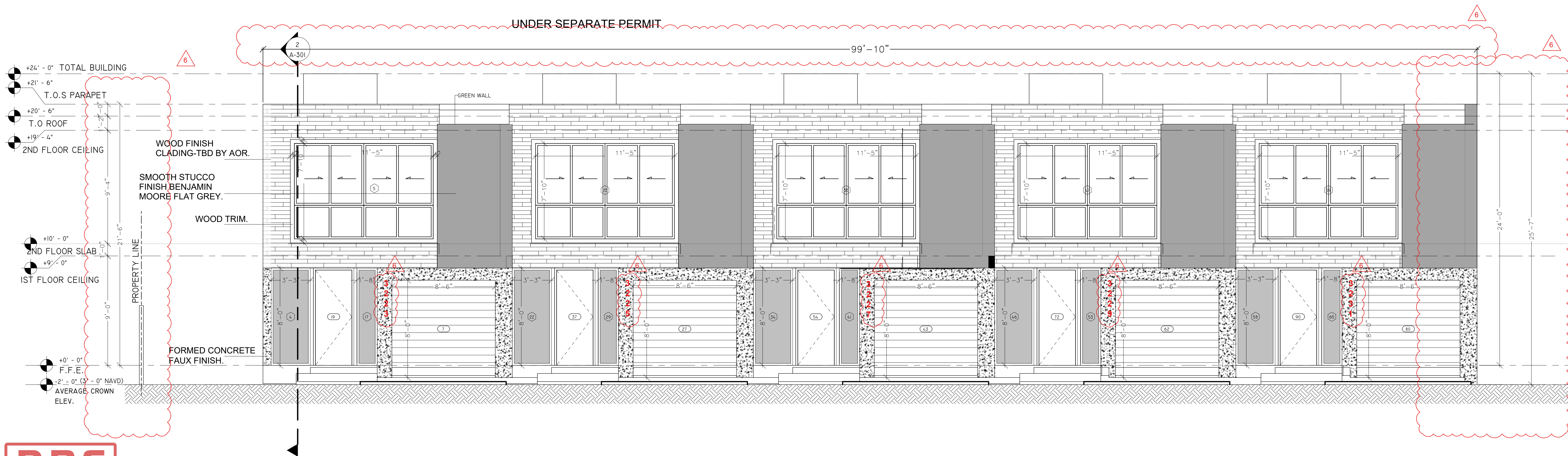


1 EAST ELEVATION  
1/4" = 1'-0"



2 RIGHT ELEVATION  
1/4" = 1'-0"

**DRC**  
PZ24-12000008  
12/17/2025



CONSULTING ENGINEER  
**ALIOSKAR GANEM P.E.**  
FL. LIC. No. 74745  
ECO POMPAÑO TOWNHOME DEVELOPMENT

3229 NE 5TH ST, POMPAÑO BEACH, FL. 33062 UNIT 4  
(ID No. 4843-31-08-0284)

NOTES/COMMENTS	
2	09-12-24
3	11-02-24
4	02-10-2025
6	10-10-2025
REVISIONS / SUBMISSIONS	

DRAWN BY: AG  
CHECKED BY: AG  
INITIAL DRAWING: ISSUE DATE  
RELEASE DATE:

ELEVATIONS